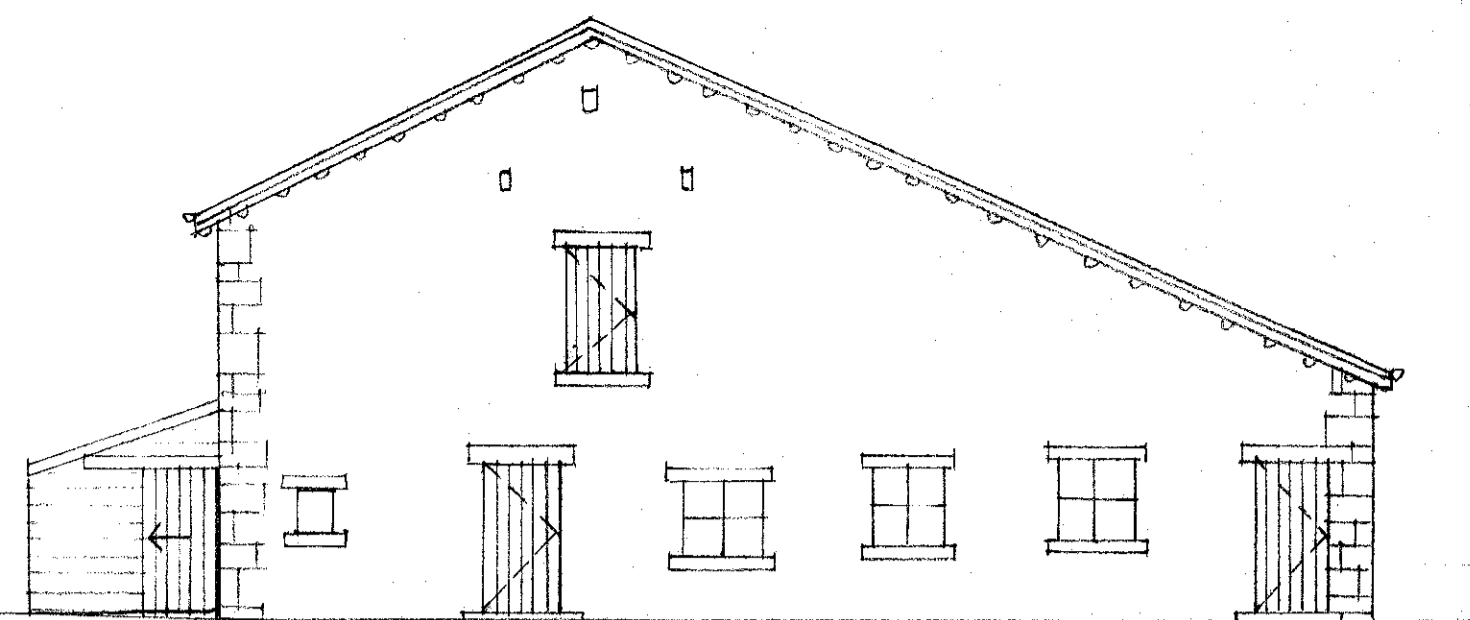
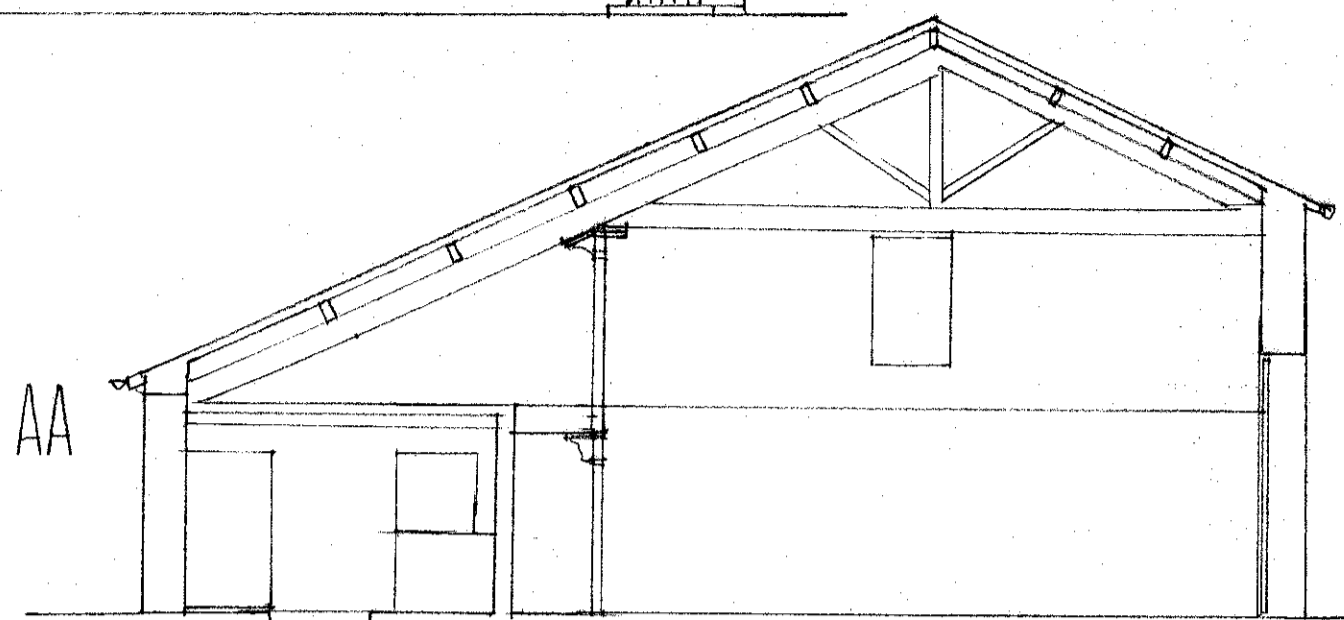


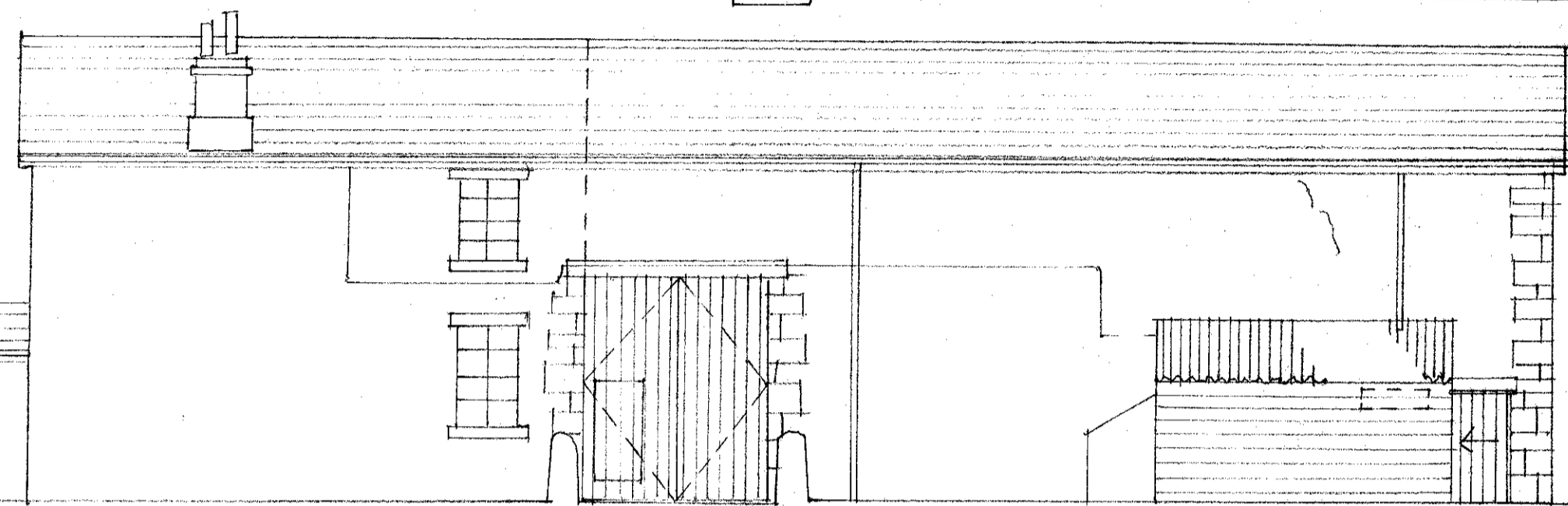
EXISTING



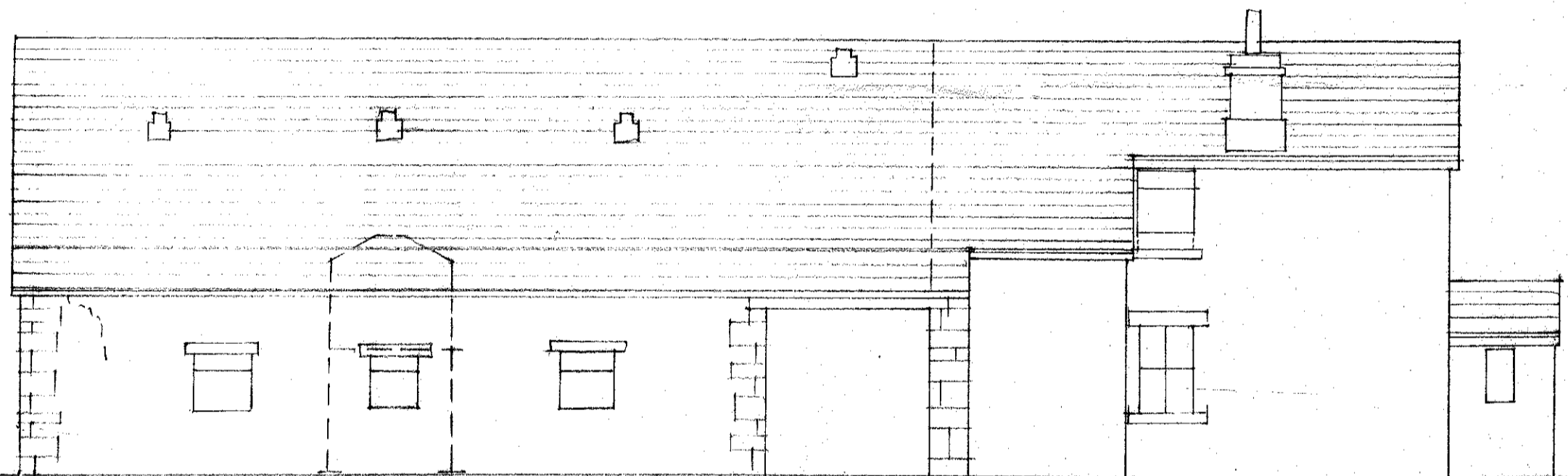
WEST



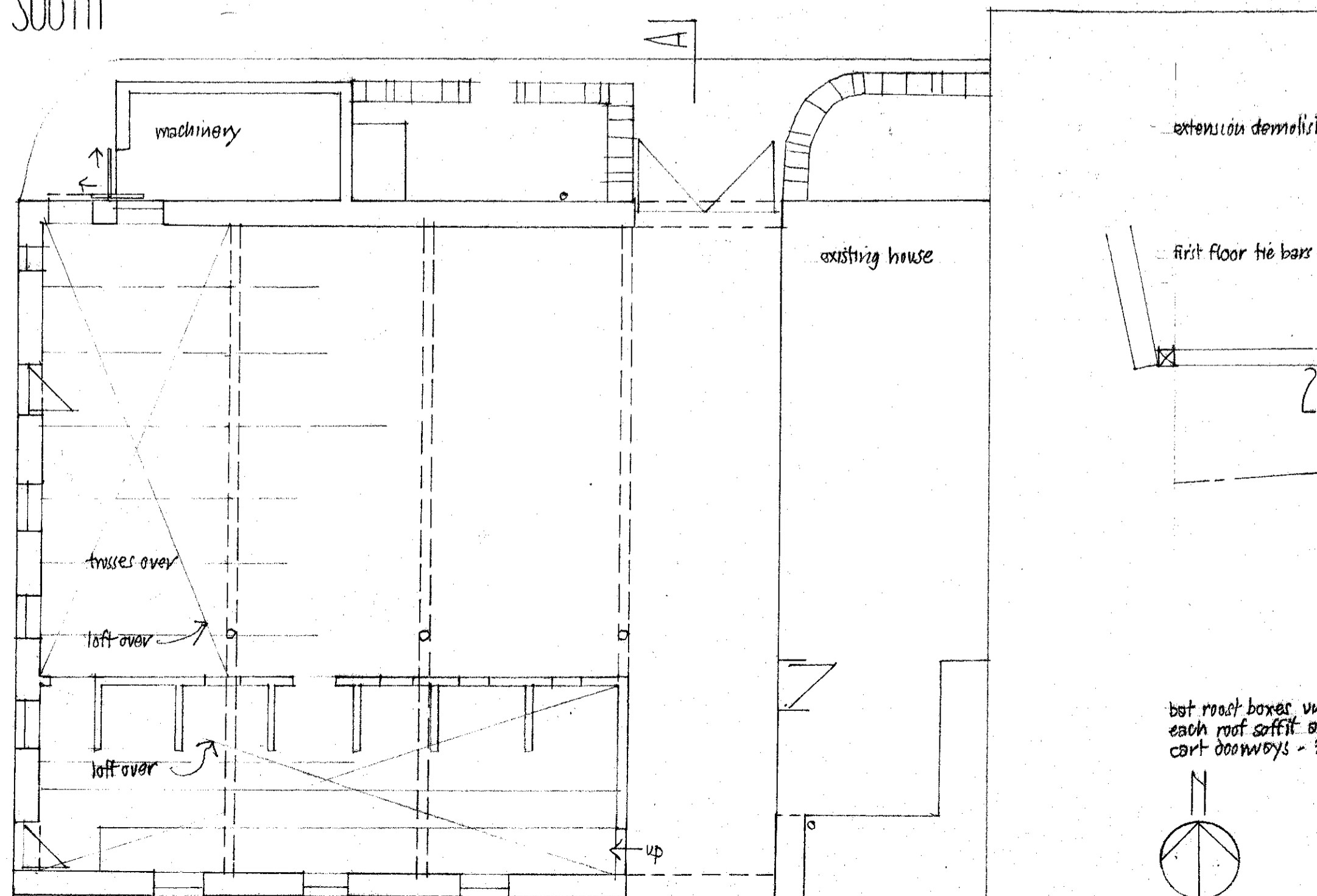
AA



NORTH

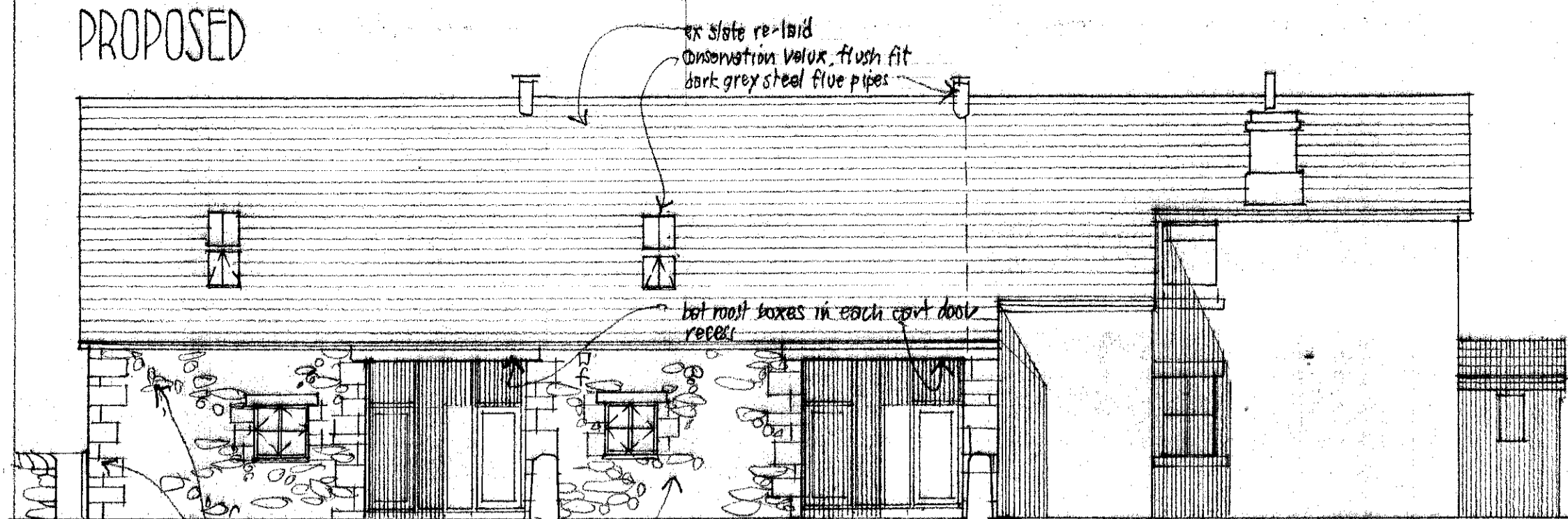


SOUTH

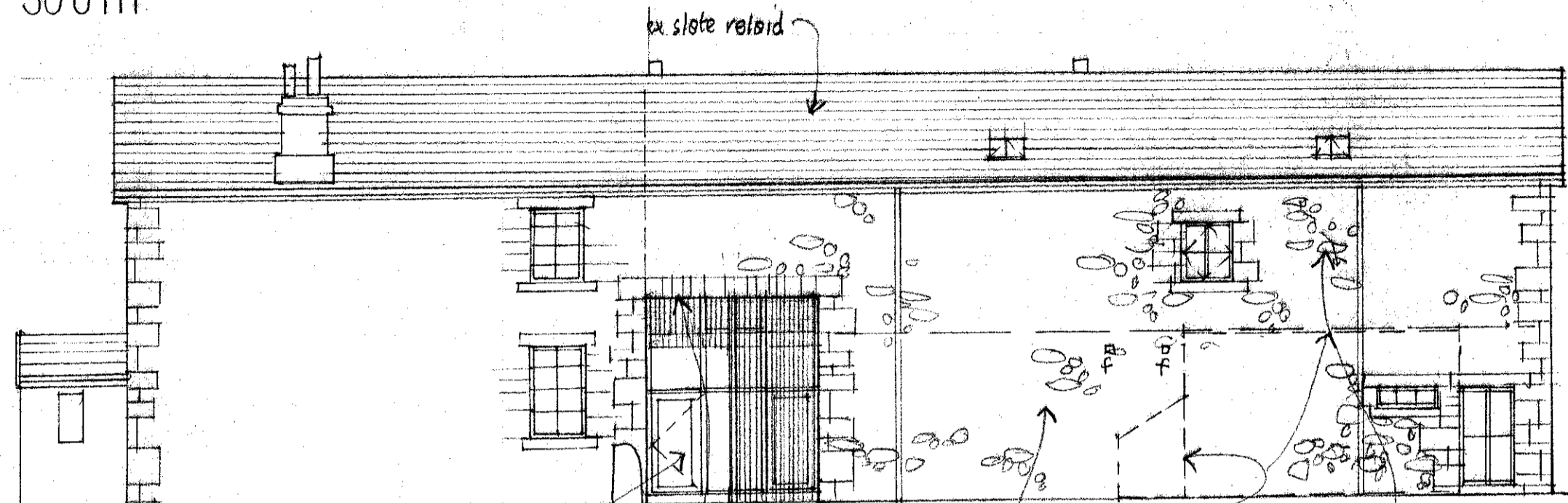


PLAN

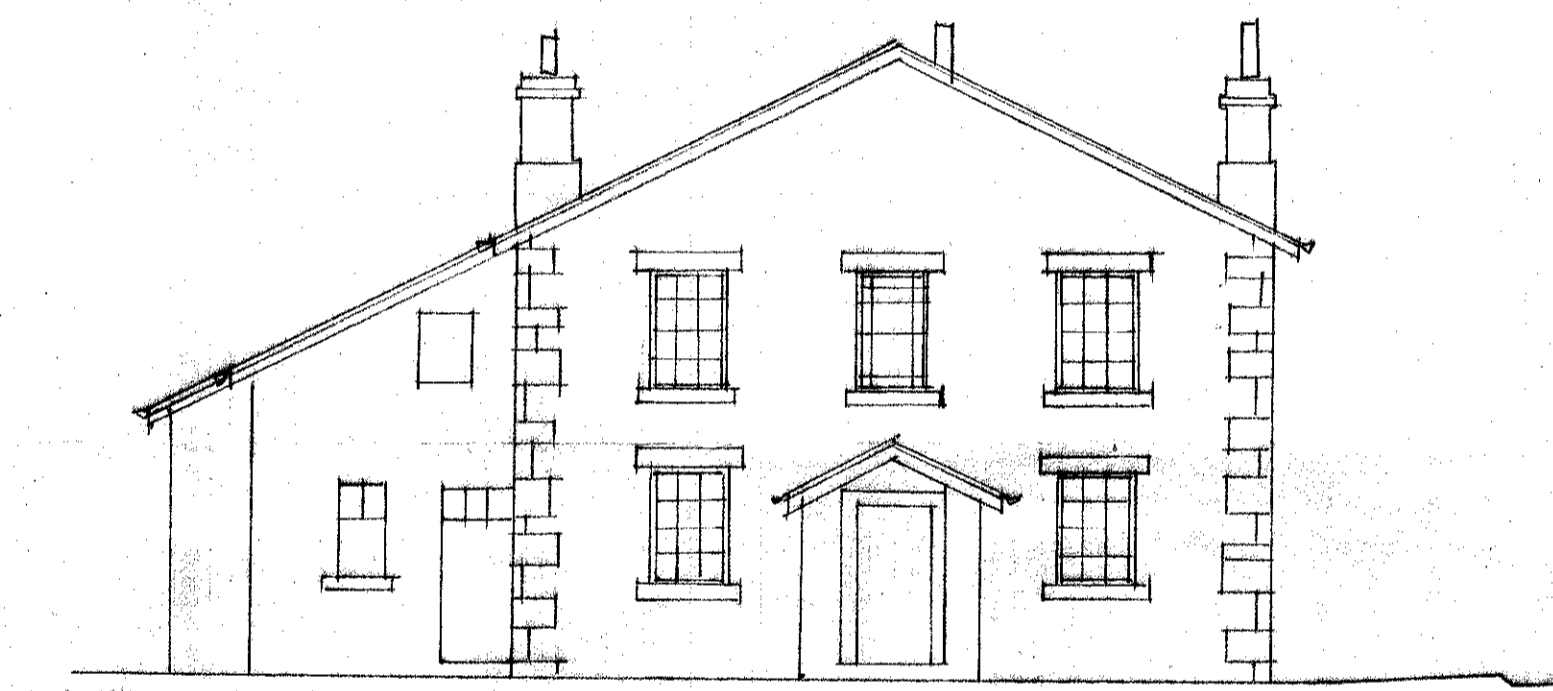
PROPOSED



SOUTH

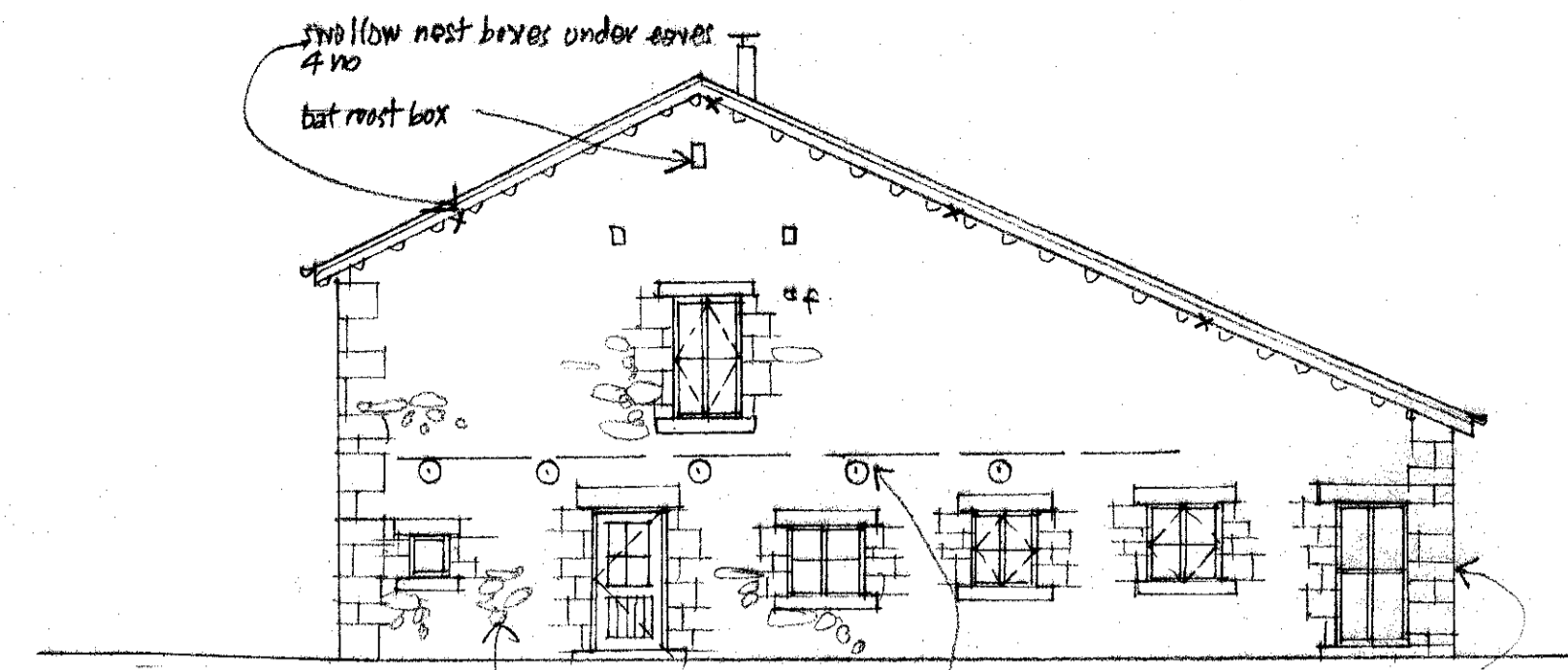


NORTH

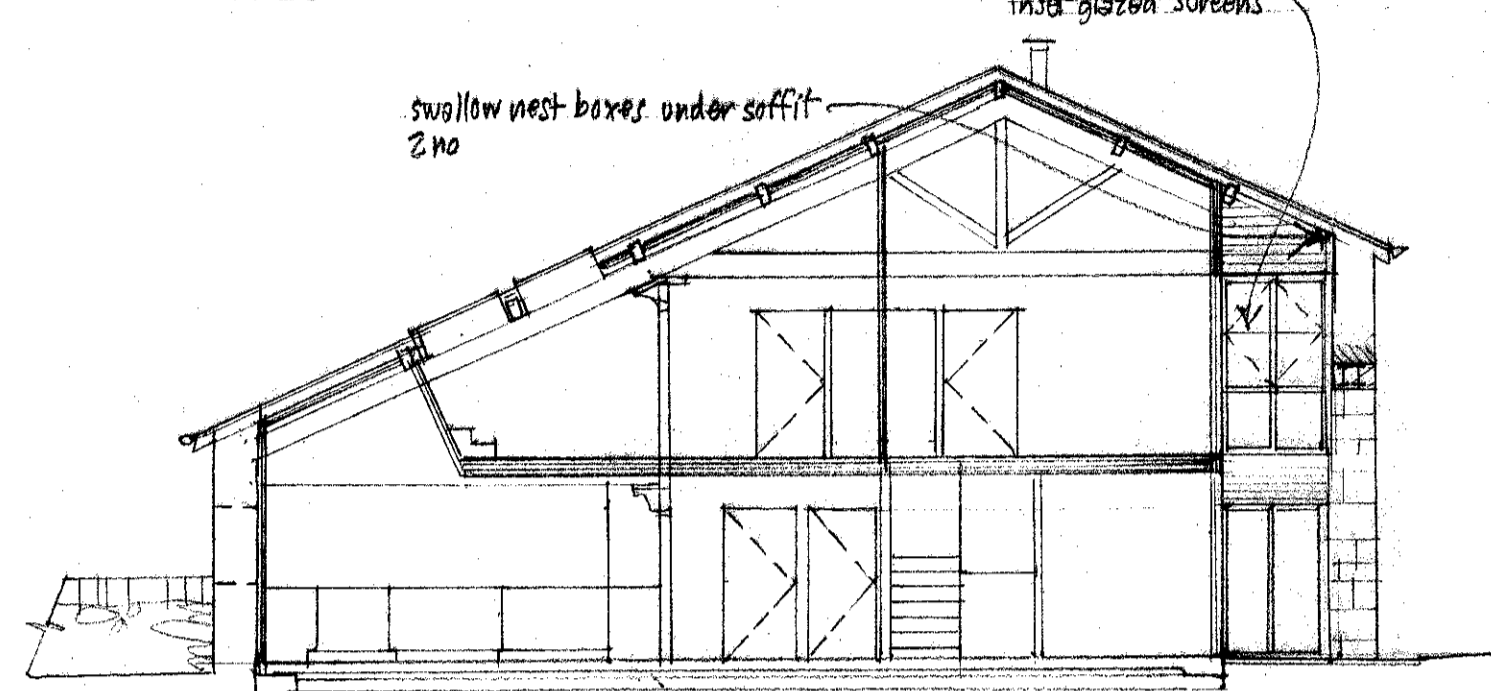


EAST

no change this elevation (existing + proposed)

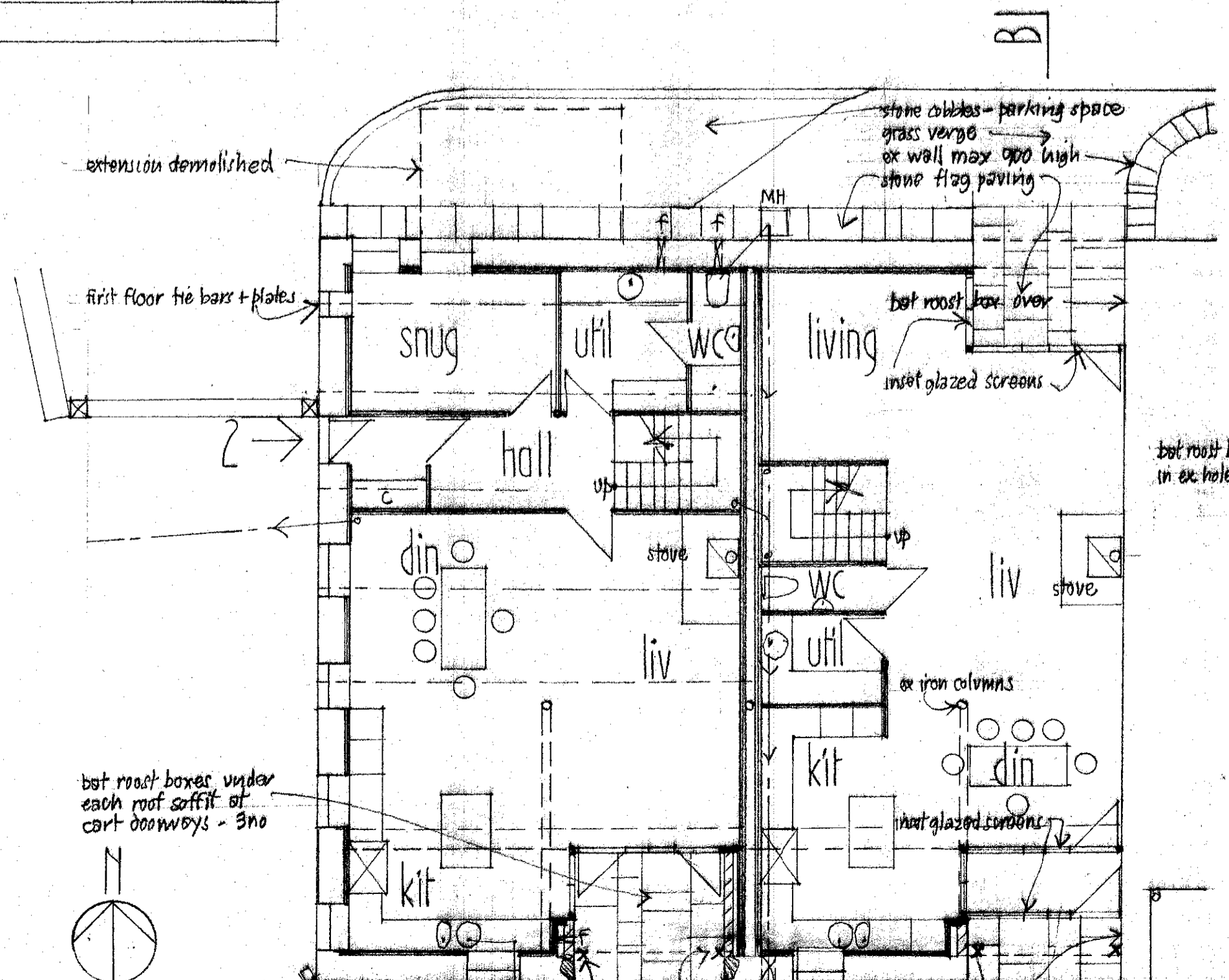


WEST

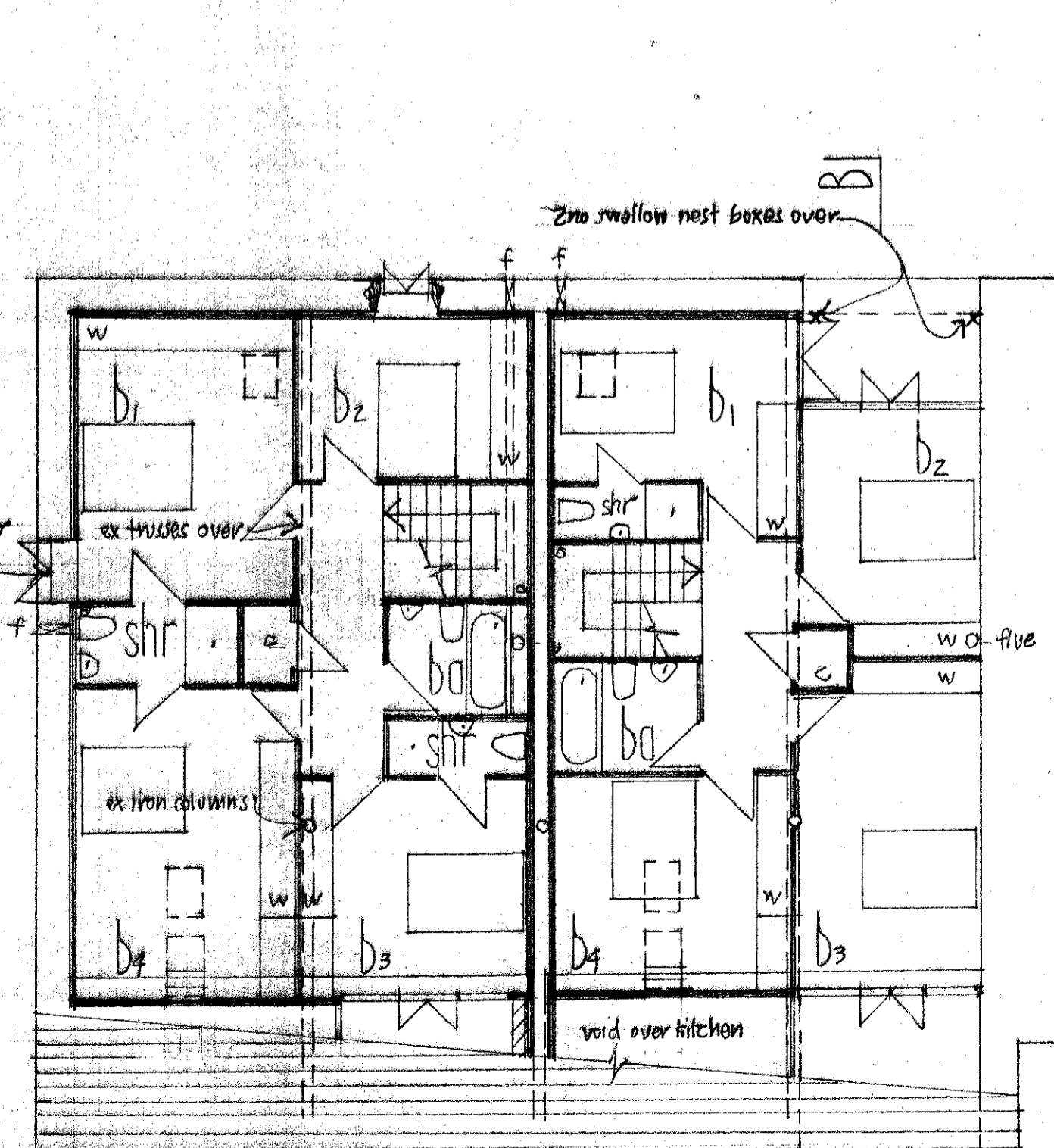


BB

units 3+4 exterior materials:
roof - existing slate re-laid
walls - existing stonework repointed
windows + doors - painted timber, heritage colour
fascias + bargeboards - painted timber, heritage colour
rv goods - black alum troughing



GROUND



FIRST

BARN CONVERSIONS UNITS 2+3
FISH HOUSE FARM CHIPPING
scale 1:100 September 2016

JW
JOHN & JENNIFER WHARTON : ARCHITECT DESIGNERS
Chaven House
Brook View
Caxton
SEKPTON
North Yorkshire YO23 3EX tel 01786 786706

2670.2